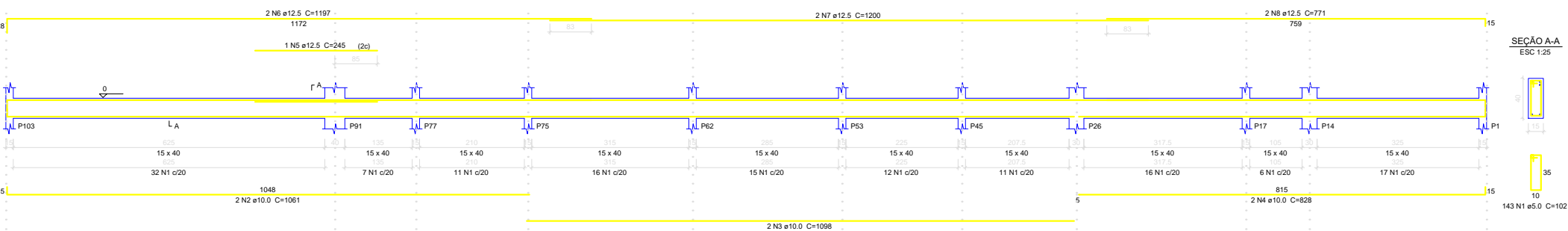


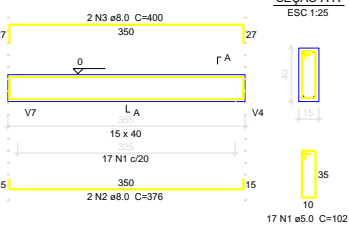
V20

ESC 1:50



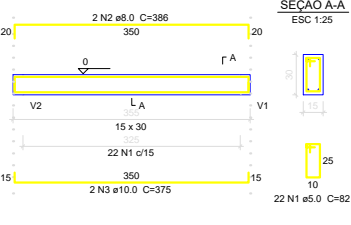
V21

ESC 1:50



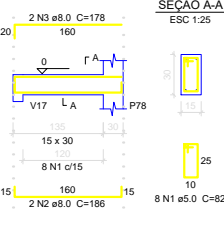
V22

ESC 1:50



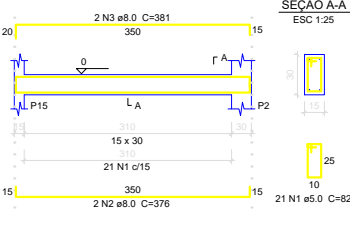
V23

ESC 1:50



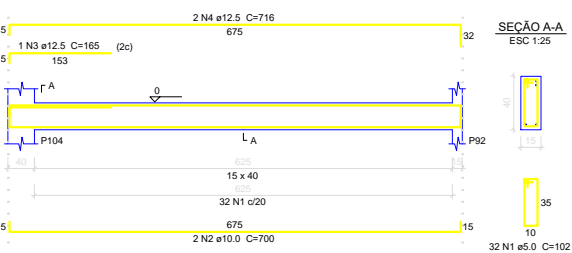
V24

ESC 1:50



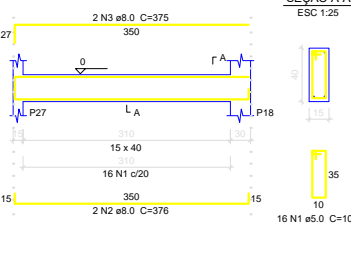
V25

ESC 1:50



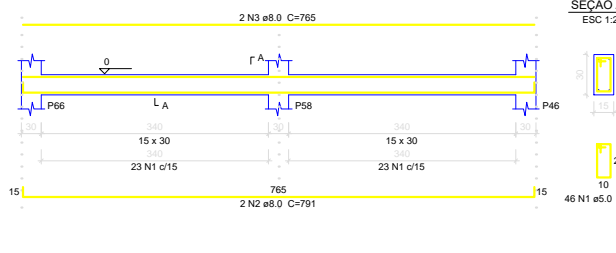
V26

ESC 1:50



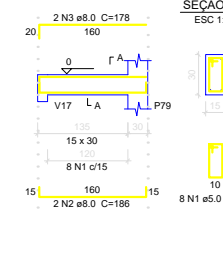
V27

ESC 1:50



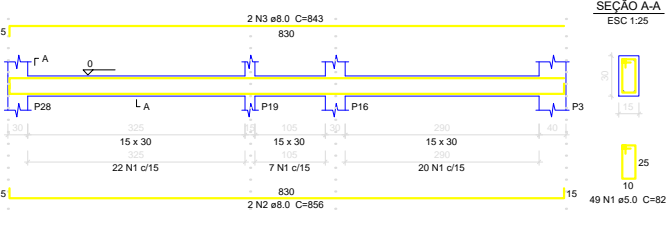
V28

ESC 1:50



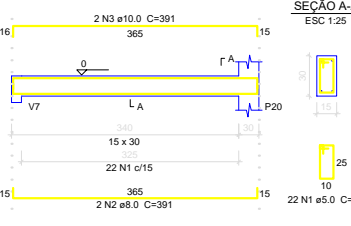
V29

ESC 1:50



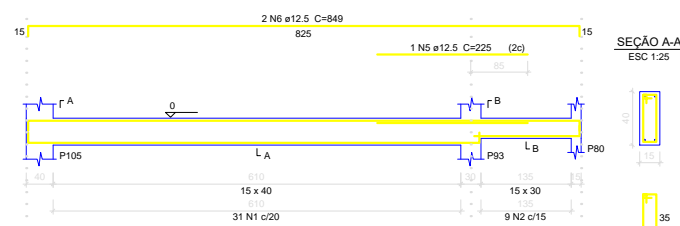
V30

ESC 1:50



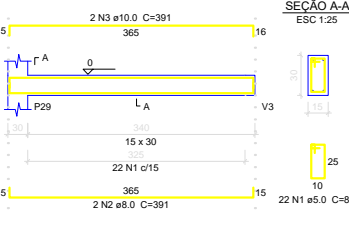
V31

ESC 1:50



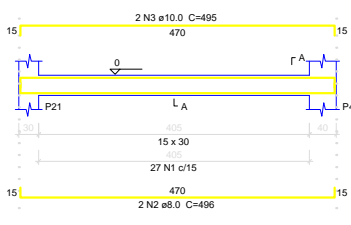
V32

ESC 1:50



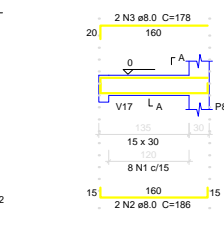
V33

ESC 1:50



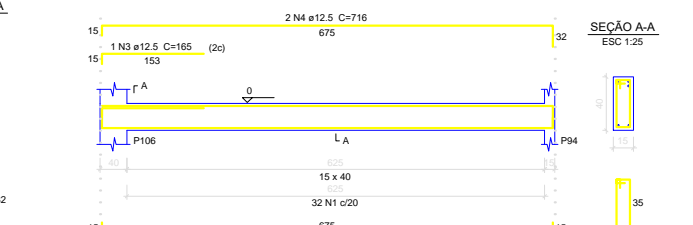
V34

ESC 1:50



V35

ESC 1:50



Relação do aço

ELEMENTO	AÇO	N	DIAM	Q	UNIT (cm)	C.TOTAL (cm)
V20	CA60	1	5.0	143	102	14586
	CA50	2	10.0	2	1061	2122
	CA50	3	10.0	2	1098	2196
	CA50	4	10.0	2	828	1656
	CA50	5	12.5	1	245	245
	CA50	6	12.5	2	1197	2394
	CA50	7	12.5	2	1200	2400
	CA50	8	12.5	2	771	1542
V21	CA60	1	5.0	17	102	1734
	CA50	2	8.0	2	376	752
	CA50	3	8.0	2	400	800
V22	CA60	1	5.0	22	82	1804
	CA50	2	8.0	2	386	772
	CA50	3	10.0	2	375	750
V23	CA60	1	5.0	8	82	656
	CA50	2	8.0	2	186	372
	CA50	3	8.0	2	178	356
V24	CA60	1	5.0	21	82	1722
	CA50	2	8.0	2	376	752
	CA50	3	8.0	2	381	762
V25	CA60	1	5.0	32	102	3264
	CA50	2	10.0	2	700	1400
	CA50	3	12.5	1	165	165
V26	CA60	1	5.0	16	102	1632
	CA50	2	8.0	2	376	752
	CA50	3	8.0	2	375	750
V27	CA60	1	5.0	46	82	3772
	CA50	2	8.0	2	791	1582
	CA50	3	8.0	2	765	1530
V28	CA60	1	5.0	8	82	656
	CA50	2	8.0	2	186	372
	CA50	3	8.0	2	178	356
V29	CA60	1	5.0	49	82	4018
	CA50	2	8.0	2	856	1712
	CA50	3	8.0	2	843	1686
V30	CA60	1	5.0	22	82	1804
	CA50	2	8.0	2	391	782
	CA50	3	10.0	2	391	782
V31	CA60	1	5.0	31	102	3162
	CA60	2	5.0	9	82	738
	CA50	3	10.0	2	700	1400
V32	CA50	4	10.0	2	171	342
	CA50	5	12.5	1	225	225
	CA50	6	12.5	2	849	1698
V33	CA60	1	5.0	22	82	1804
	CA50	2	8.0	2	391	782
	CA50	3	10.0	2	391	782
V34	CA60	1	5.0	27	82	2214
	CA50	2	8.0	2	496	992
	CA50	3	10.0	2	495	990
V35	CA60	1	5.0	8	82	656
	CA50	2	8.0	2	186	372
	CA50	3	8.0	2	178	356
V35	CA60	1	5.0	32	102	3264
	CA50	2	10.0	2	700	1400
	CA50	3	12.5	1	165	165
	CA50	4	12.5	2	716	1432

Resumo do aço

AÇO	DIAM	C.TOTAL (m)	PESO (kg)
CA50	8.0	165.9	65.5
	10.0	138.2	85.2
	12.5	117	112.7
CA60	5.0	474.9	73.2
	PESO TOTAL		
	CA50	263.4	
	CA60	73.2	

Vol. de concreto total (C-25) = 5.31 m³
Área de forma total = 85.62 m²



PREFEITURA MUNICIPAL DE
VÁRZEA GRANDE
amar - cuidar - acreditar

PREFEITURA MUNICIPAL DE VÁRZEA GRANDE

Av. Castelo Branco, Espaço Municipal, 2500 - Centro Sul, Várzea Grande/MT
CEP 78125-700 - Fone/Fax: 65 3688 8000

PROJETO:

CRECHE DO IDOSO

LOCALIZAÇÃO:

Avenida Presidente Arthur Bernardes s/n
Bairro: Ipase - Várzea Grande - MT

ASSUNTO:

FUNDAÇÃO - DETALHES VIGAS BALDRAMES

AUTORES DO PROJETO:

AUREO EMANOEL DA SILVA
CREA: MT042435

DATA:

11/12/2019

ESCALA:

1/225

FOLHA Nº

03/08